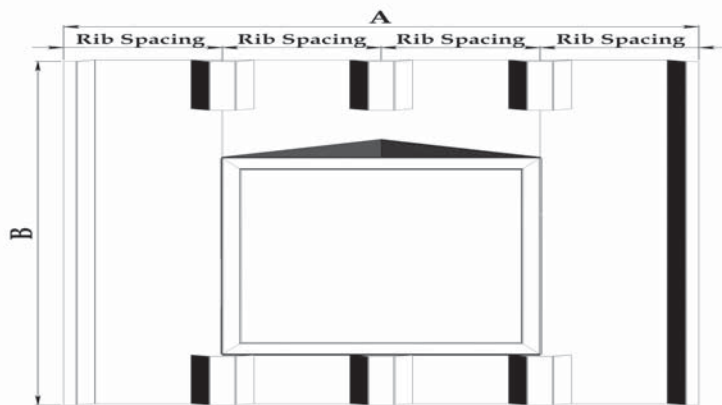
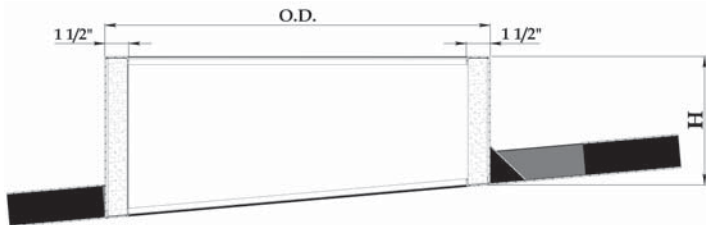
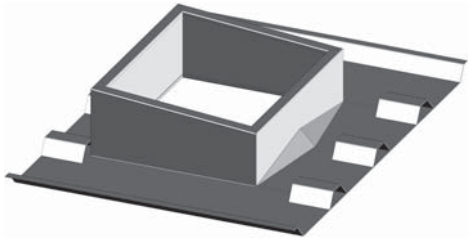




The choice to make when superior quality and service count.

2655 Airport Rd. • Santa Teresa • NM • 88008 • Ph 505.589.2130 • Fx 505.589.2608

MODEL MMP-4000  
Ribbed Roof Curb



SUBMITTAL

Project: \_\_\_\_\_

Contractor: \_\_\_\_\_

Architect: \_\_\_\_\_

Engineer: \_\_\_\_\_

Date: \_\_\_\_\_

Submitted by: \_\_\_\_\_

STANDARD FEATURES

- Aluminum .080/ .125 standard
- Partitions for roof top a/c equipment available
- Insulation optional (fiberglass or polyisocyanurate)
- Painted finishes available
- Water diverter in lieu of cricket available
- Curb flange out w/ corners closed in lieu of flange in and mitered corners are available
- All seams continuously welded watertight

REQUESTED OPTIONS

- 1.
- 2.
- 3.

Pitch: \_\_\_\_\_

Roof Model No.: \_\_\_\_\_

FINISHED DIMENSIONS

QTY	O.D.	H	A	B	Rib Space 12" 16" 18" 24"	Job Description