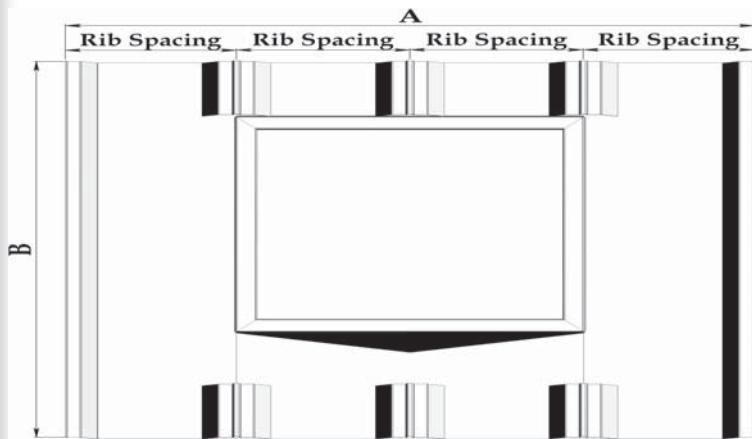
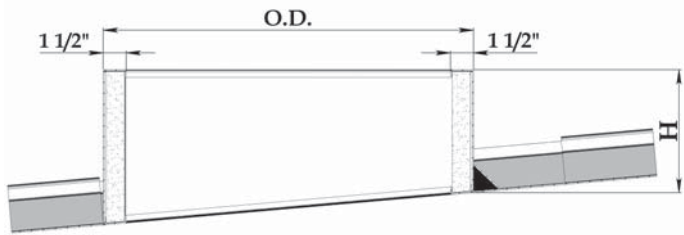
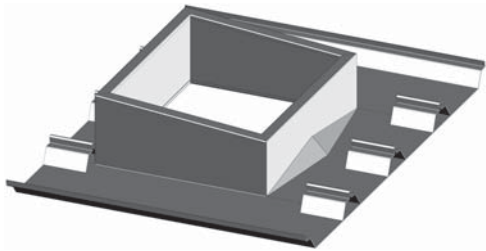




The choice to make when superior quality and service count.

2655 Airport Rd. • Santa Teresa • NM • 88008 • Ph 505.589.2130 • Fx 505.589.2608

**MODEL MMP-6000**  
Standing Seam Roof Curb



**SUBMITTAL**

Project: \_\_\_\_\_

Contractor: \_\_\_\_\_

Architect: \_\_\_\_\_

Engineer: \_\_\_\_\_

Date: \_\_\_\_\_

Submitted by: \_\_\_\_\_

**STANDARD FEATURES**

- Aluminum .080/ .125 standard
- Partitions for roof top a/c equipment available
- Insulation optional (fiberglass or polyisocyanurate)
- Painted finishes available
- Water diverter in lieu of cricket available
- Curb flange out w/ corners closed in lieu of flange in and mitered corners are available
- All seams continuously welded watertight

**REQUESTED OPTIONS**

- 1.
- 2.
- 3.

Pitch: \_\_\_\_\_

Roof Model No.: \_\_\_\_\_

**FINISHED DIMENSIONS**

| QTY | O.D. | H | A | B | Rib Space<br>12"<br>16"<br>18"<br>24" | Job Description |
|-----|------|---|---|---|---------------------------------------|-----------------|
|     |      |   |   |   |                                       |                 |