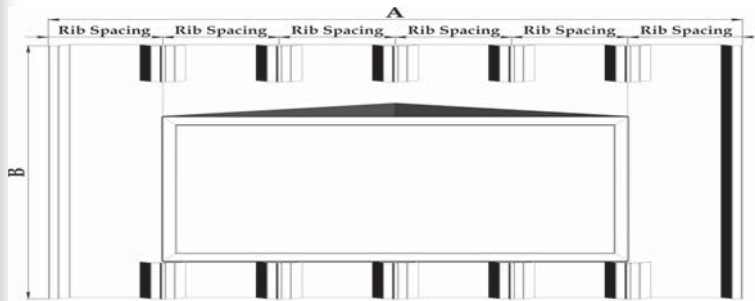
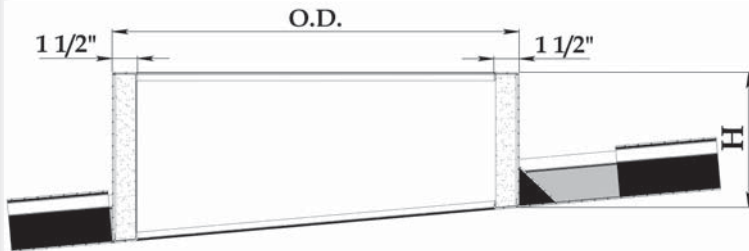
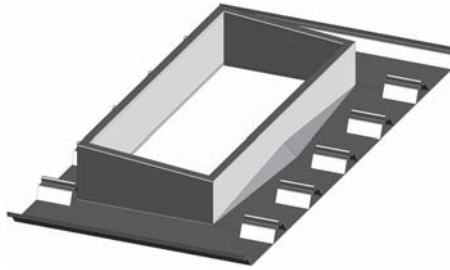




The choice to make when superior quality and service count.

2655 Airport Rd. • Santa Teresa • NM • 88008 • Ph 505.589.2130 • Fx 505.589.2608

MODEL MMP-6300
Standing Seam Roof Curb



SUBMITTAL

Project: _____

Contractor: _____

Architect: _____

Engineer: _____

Date: _____

Submitted by: _____

STANDARD FEATURES

- Aluminum .080/ .125 standard
- Partitions for roof top a/c equipment available
- Insulation optional (fiberglass or polyisocyanurate)
- Painted finishes available
- Water diverter in lieu of cricket available
- Curb flange out w/ corners closed in lieu of flange in and mitered corners are available
- All seams continuously welded watertight

REQUESTED OPTIONS

- 1.
- 2.
- 3.

Pitch: _____

Roof Model No.: _____

FINISHED DIMENSIONS

QTY	O.D.	H	A	B	Rib Space	Job Description
					12"	
					16"	
					18"	
					24"	